

CONNECTIONS

The Armchair Treasure Hunt

1988-89



DRAMATIS PERSONÆ

Paul Coombs - The Writer

Brian Jackson - The Artist

PROLOGUE

A hush falls over the audience, the lights dim, and the curtain rises on another Armchair Treasure Hunt...

Somewhere in the South-East, deep in some woods, I have hidden a box. Your task is to locate it. To find this Treasure, you must solve a number of questions, spot the clues that are concealed in the pictures, and decode the instructions that will reveal its precise location. As well as an award for the first finder of the box, there are prizes for the best solutions to the entire puzzle.

All the questions this time are 'connections'. For each one, I have given you three words or phrases, which can be connected by another word or short phrase. This is the answer I am looking for. For example, if the question was "Charlotte; Emily; Anne", then you would immediately be able to give the answer of "Bronte". You wouldn't? Oh dear. That would be one of the easier ones...I have used lots more devious ways to make the connections and, to make things more difficult, I have not been too consistent in my use of definite and indefinite articles, capital letters and quotation marks.

It is no secret that the first letters of each answer spell out a sentence that may or may not be useful in locating the Treasure. Use surnames (except in one case) and write numeric answers as words. You should ensure that your answers fit the linking sentence. If they do not, then either you are wrong or else you have found a connection other than the one I am after. In the latter case, you should try to find 'my' answer. Marks will only be given for 'alternatives' if they are accompanied by some sort of justification.

If you find the Treasure-box, then read the instructions inside. Replace it in its original position, having consideration for later finders. There is a possibility that the box will be found by someone unconnected with the competition. If you are sure you have reached the right place (you will know if you have!) and there is nothing there, then please try to contact me.

The marking scheme is complicated (details on request), but attempts to give the most marks for those questions found to be the hardest. Bonus marks will be awarded for finding the connecting sentence; for determining the village in or near which the Treasure is hidden; for solving the code; and for finding the Treasure as early as possible.

There is no 'entry form' - Logi-standard A4 is fine. Legible nearly-wrong answers are likely to get better marks than illegible nearly-right ones. You need not supply a complete explanation of your answers, unless you so wish; the connecting word or phrase will suffice.

PROLOGUE

There are four prizes, all of Harrods vouchers. The first finder of the Treasure box will get £50. There will be another £50 prize for the person gaining the most marks; and there are also second (£30) and third (£20) prizes in this category. No person/team may win more than one prize.

Entries must have reached me by Friday, January 20 1989. Answers and results will be sent out as soon as possible after this, but only to people who have entered the competition. If, by any chance, the Treasure has not been found, then additional clues will be issued, again only to people who have entered. I suggest that entrants keep these questions, together with a copy of their answers.

Thanks are due to Brian Jackson for the illustrations (that zoology degree has finally turned out to be useful!); Richard Monger (BAe) for QA and some good questions; and to the Logica Sports and Social Club for the prizes.

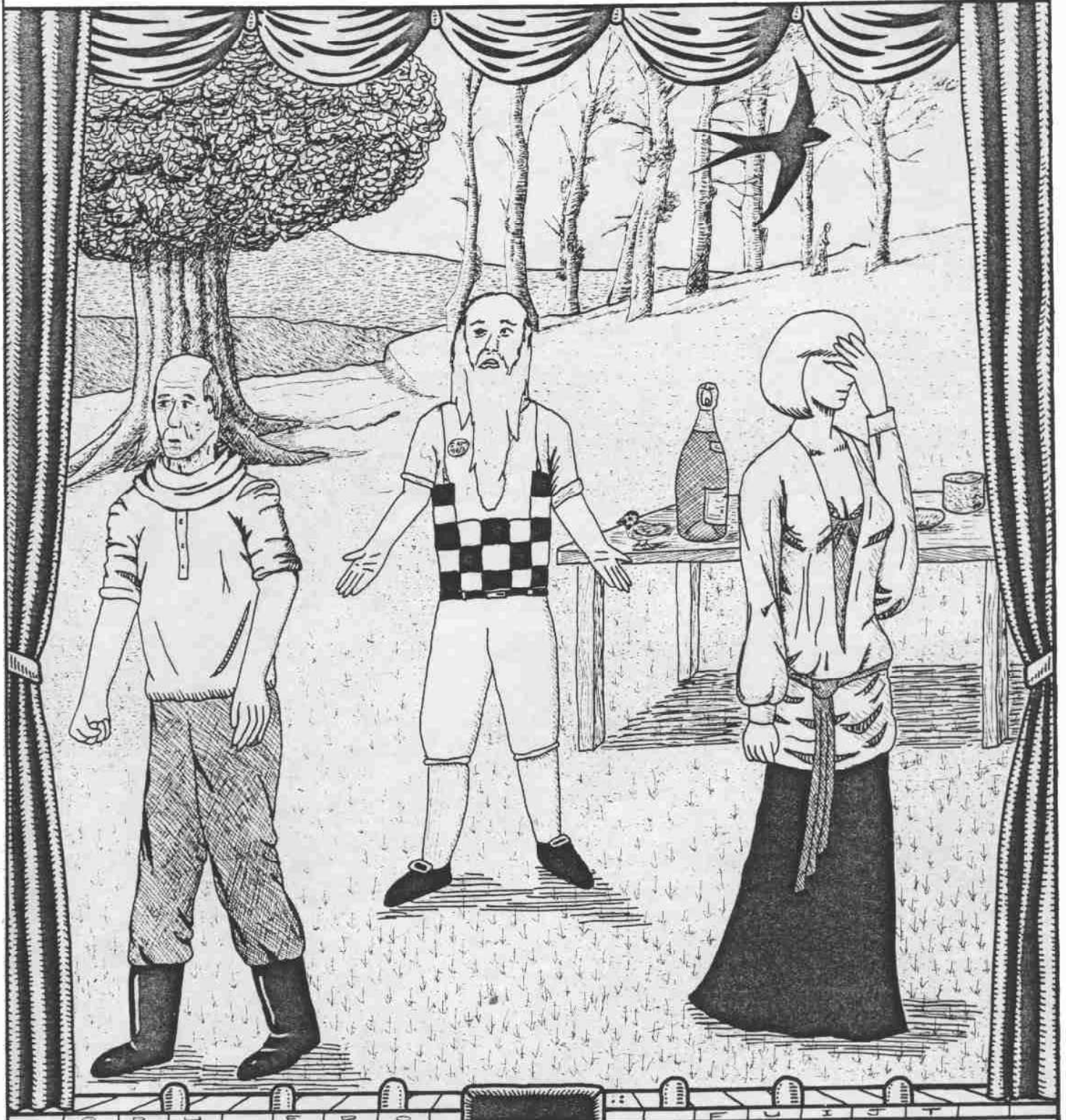
Finally, I should warn you about the red herrings. Just when you think you have got the problem cornered then you might find you have to check again. As someone once said - "Beware of knowledge; it is more dangerous than ignorance".

Good luck...

Paul Coombs 23NS/Basement Ext. 3011
Home: Stevenage

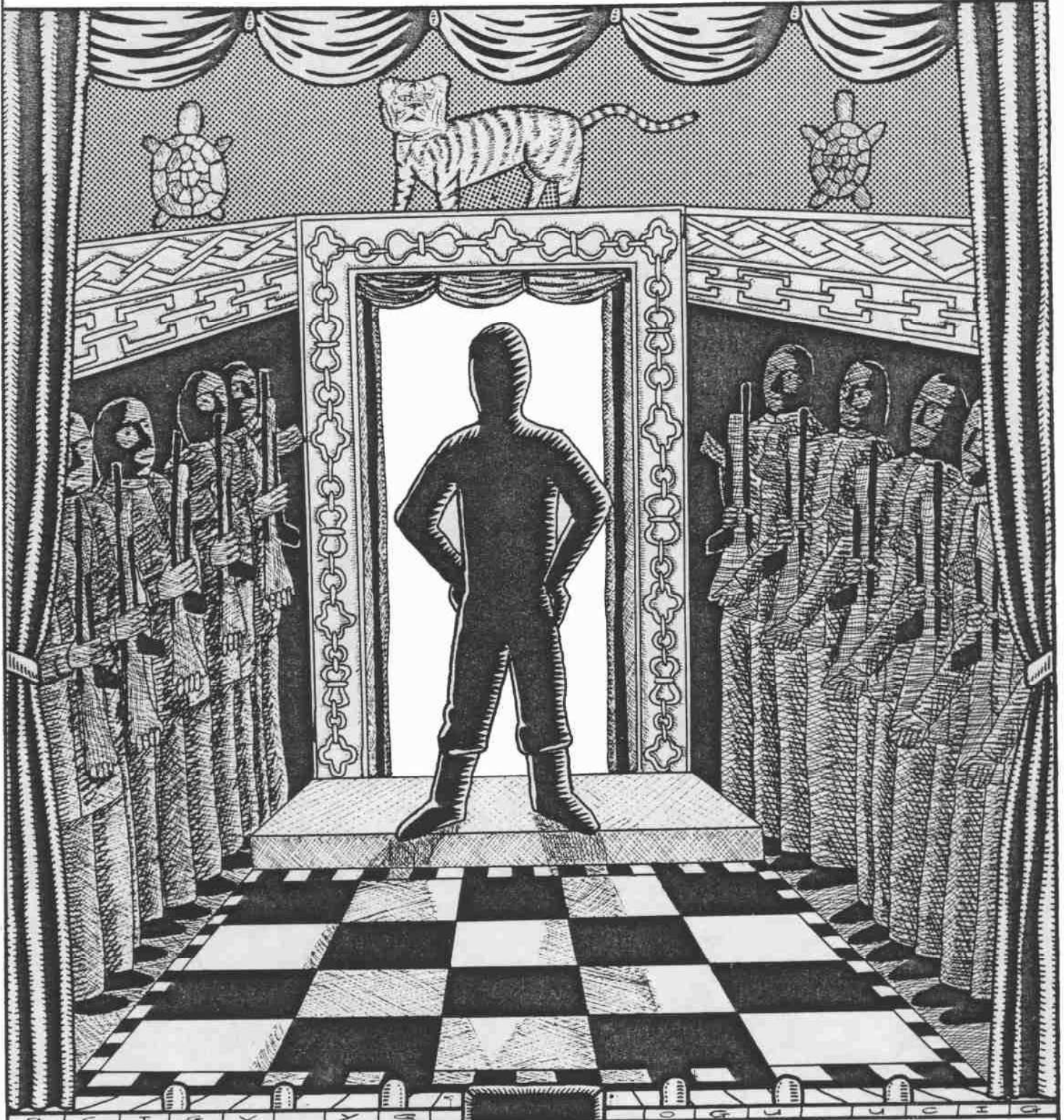


ACT I SCENE I



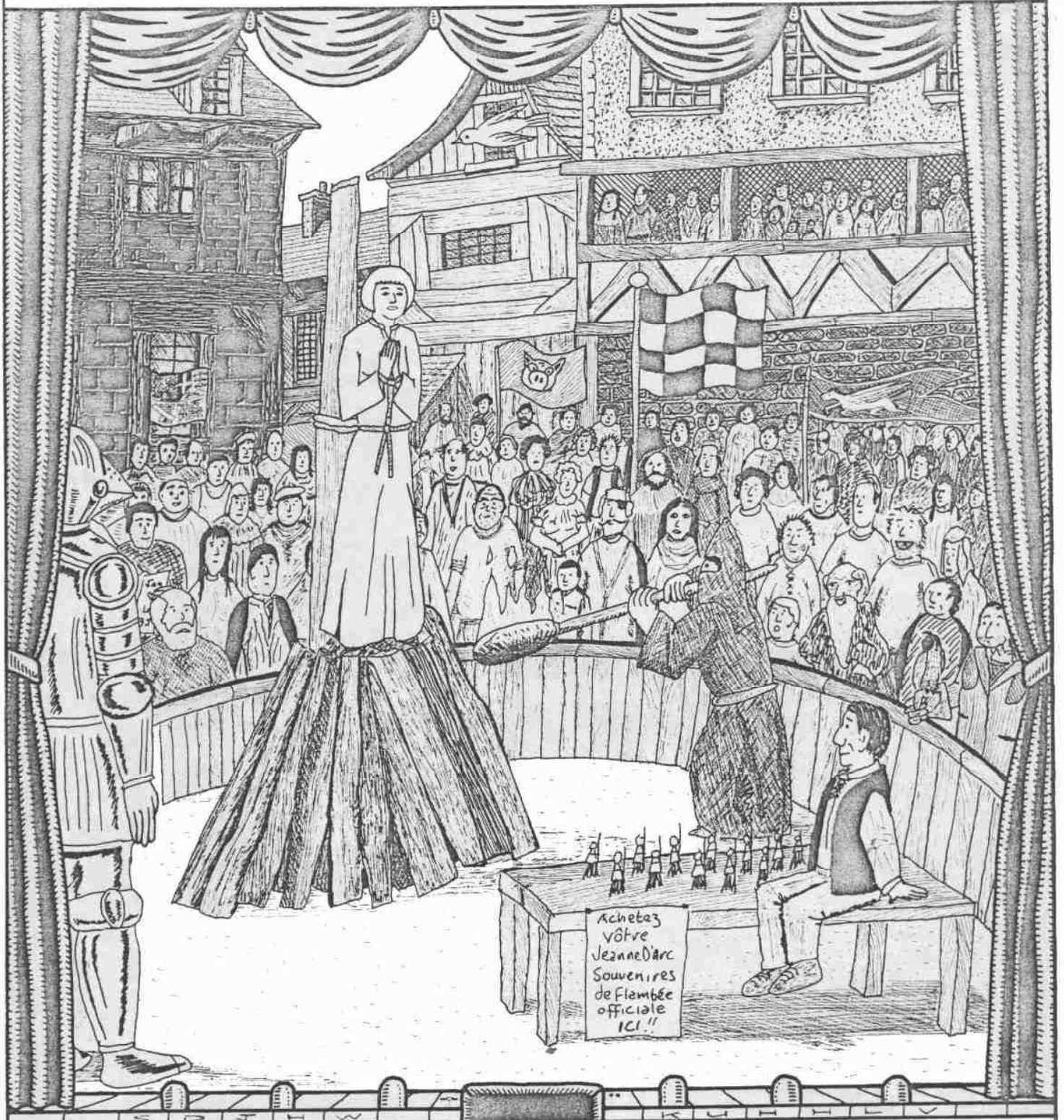
1. $\text{CH}_3\text{CH}_2\text{OH}$; $(\text{CH}_3)_2\text{CHOH}$; $\text{CH}_2=\text{CHCH}_2\text{OH}$
2. Leopard; Tiger; Easter
3. The Holy Office; Crosswords; Act of Faith
4. Malus Pumila; Musa Sapientum; Rheum Rhapsodicum
5. Jacob Roggeveen; Hanga-Roa; Aku-Aku
6. Sphenoid; Ethmoid; Vomer
7. Polynesia; Norwegian blue; Captain Flint
8. Intellectuals; Arnold Bennett; Grandmother
9. A 1.25 litre bottle; Fram; The Nobel Prize
10. John Dennis; Times; Belemnite
11. Fern-seed; Heliotrope; Alberich
12. Dotheboy's Hall; Father Christmas; Rasputin
13. Cheese; A fop; A penguin

ACT I SCENE II



- R C I G V Y R T O G U L U C H G
14. Emiliano Zapata; Ngo Dinh Diem; Faisal Ibn'abd Al-Aziz Al Saud
 15. Abraham, Martin & John; Happy Birthday; Let 'Em In
 16. A Horse; A Weasel; The Prime Minister
 17. Wing; Madman; Pine
 18. The Painted Desert; Ria Langham; Vests
 19. Hormelic; Garpas; Zarbalath
 20. Singly; Autumnal weather; A prickly pear
 21. Fomalhaut; Adhara; Spica
 22. Money; 14th Street; 50
 23. Rupert Brooke; 19:05; An acanthopterygious fish
 24. Cornwall; Kent; Gloucester
 25. Heath hen; Passenger pigeon; Tecopa pupfish
 26. Beer; Dyers and Vintners; Flanders

ACT II SCENE I



27. Hokey-pokey; St. Pancras; Puck
28. St. Paul; Raleigh; Bismark
29. Smooth; Warty; Californian
30. Central Park; Cleopatra; Piazza San Giovanni, Laterano
31. Fisher; Hilton; Warner
32. Myles; At Swim-Two-Birds; Cruiskeen Lawn
33. Christmas; Rings; Notes
34. Junglinster; Wiltz; Capellen
35. Finn; Soling; 470
36. Oxford; Dewi; Glorishears
37. Vaucluse; Paisley; South Africa
38. Montreux; Petra; Labour
39. Carl; Greg; Keith

ACT II SCENE II



- T E K I S V V N Y W X
40. James Hunt; Arctophily; Towcester Racecourse
 41. Athens; Parliament; A baker's daughter
 42. Gopher; Clouds; Ham
 43. Salsify; Dog letter; Pistol
 44. Miranda; 84.015 years; A sickle
 45. Debt; Polstead, Suffolk; Kniphofia
 46. Gunton Church; Kedleston Hall; Lansdowne House
 47. Acton; Currer; Ellis
 48. Sta Maria Delle Grazie; Parachute; Vincenzo Peruggia
 49. Henry Winstanley; John Rudyard; John Smeaton
 50. Stone; Marat; Biscuit
 51. The arms of the Medici; Joel Chandler Harris; Simon Legree
 52. Dali; Blondie; Meucci

ACT III SCENE I



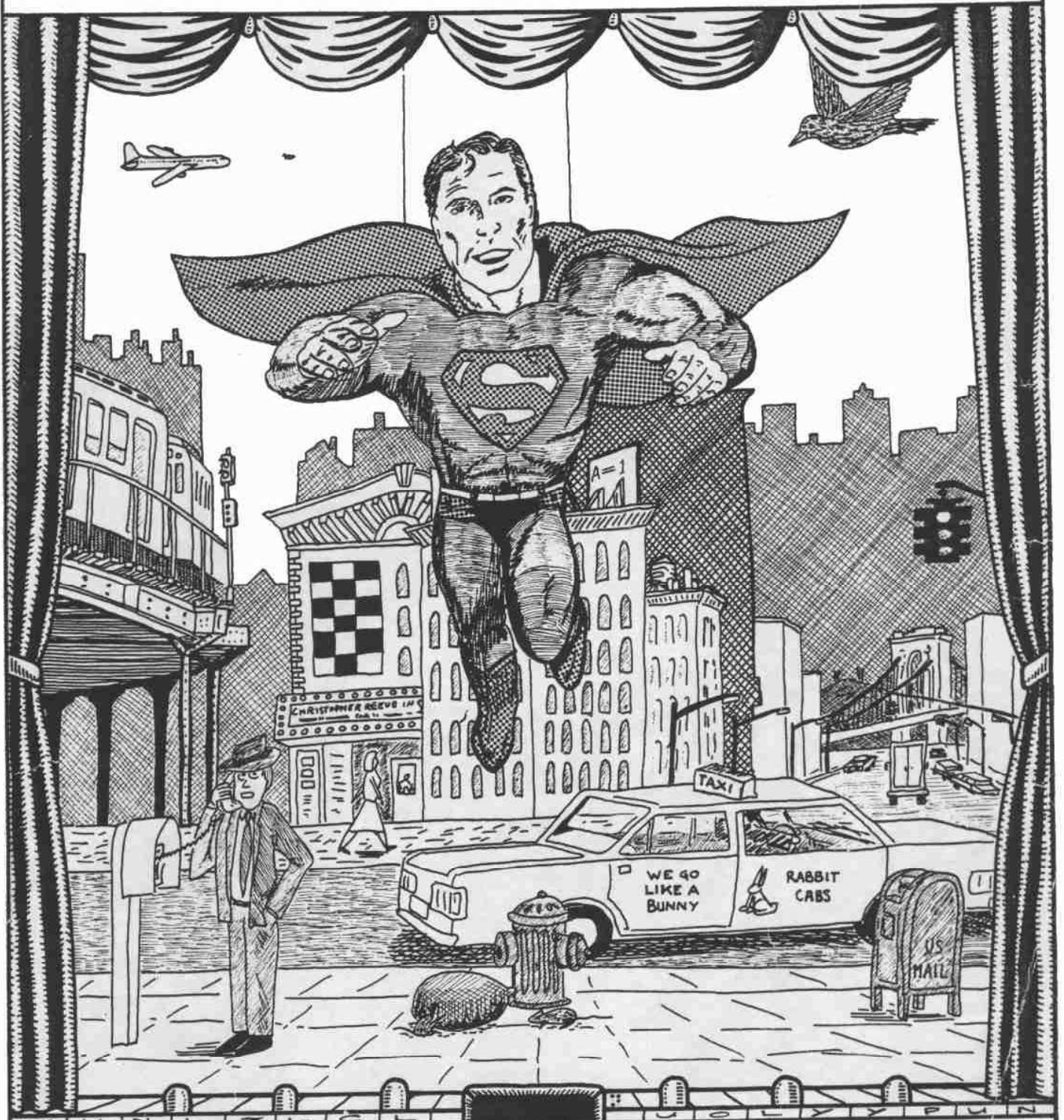
- U E L S K N A S : F S T Y M T W
53. Show me; The Iron Curtain; Samuel Clemens
 54. Rex Harrison; Horatio Nelson; John Ford
 55. Charles II; Newmarket; Chatterton
 56. Geddington; Hardingstone; Waltham
 57. D-Day; Deseret; Craig Breedlove
 58. The Modern Prometheus; Mimosa; The Baths of Caracalla
 59. Verreaux; Martial; Bonelli
 60. Conger; Ophelia; Florence
 61. The Penguin; Protection; Julie Andrews;
 62. A swan-drawn boat; Elsa; The Bridal Chorus
 63. Nadezhda Von Meck; Winter Daydreams; Tatiana
 64. The giant rat of Sumatra; Apiculture; Dr. Joseph Bell
 65. Able & Baker; Belka & Strelka; Enos

ACT III SCENE II



66. Palmerston; Hampden; Cromwell
67. William II; Gainsborough; Caruso
68. Berlin; Scurvy; The cuckoo clock
69. Ashby-de-la-Zouche; Rowena; Torquilstone
70. Will Somers; Three's a crowd; A French bishop
71. 644 square inches; The Cutler's Company; Danish knights
72. Henry III's wife's uncle; Patience; Cabbage
73. 8,128; 33,550,336; 496
74. St. Ursula; The Gregorian Calendar; The Education Act, 1944
75. A dog; A red herring; John Crome
76. Marble; King; Castle
77. Giverny; The Folies Bergere; Bougival
78. Daffodils; Claudius; A Reflection;

ACT III SCENE III



79. Shar-pei; Argos; The Canary Islands
80. Newman; Trousers; Tyburn
81. Hippolyte Mege-Mouries; "Aqualung"; John Harrison
82. A coin; A goblin; A Wurlitzer
83. Iron; Beano; Pinch
84. A whip; A transitory phenomenon; Lady Guildford Dudley
85. 29 May; Turkey; Epsom
86. America; Quimby; Spiced rum with eggs
87. Das Kapital; Kubla Kahn; Felix Holt
88. Psychiatry; Budgerigar food; Fleet Street
89. Brumaire; World War I; Thomas Hood
90. Father O'Flynn; Sergeant Murphy; Jack Horner
91. And finally... What connects all the pictures in this quiz?

EPILOGUE

A concealed box must dim the box. Decode on the award. Instructions reveal the audience. Lights over it are to somewhere; and is this the award this audience pictures? Lights some pictures first. Will the best-concealed questions reveal? I must solve questions another lights. Is...is this the audience? Solutions are the task. The...the curtain, the questions solve some. South-east of the south, find the concealed woods. Entire solutions best. An award-box and best-hidden pictures first on it. South is the must. Concealed pictures best. Concealed box - Hush-hush! Is box the east? Solve the concealed finder. Prizes will that armchair decode.

Is this the must? Dim the lights, solve the clues. A treasure the first will in some curtain reveal. Another to decode. Solve this somewhere that will the solutions locate. Task is - spot the armchair of the woods. Are prizes best on deep lights? A find for well-hidden box. That award on clues will locate the award-box. Some woods south to there. Clues I locate are for hidden award. As for audience - this must a best box reveal. Spot finder hunt prizes to concealed box-curtain for hunt. This concealed armchair - entire find best. On treasure, the award on some pictures a well reveal. Solve somewhere as rises the hush. Questions that for your clues and you is hidden. Must solve task! Lights over that entire hidden armchair (its clues hidden).

Best solutions to best solve questions for audience. Some are this dim! Is box the decode to dim the east? First solve questions. Questions that find a first will reveal some well. Precise location of lights have a treasure. The audience-award of armchair; best spot is the east. South will as south falls. I number questions well! Box concealed as solutions are. Must I the hidden curtain solve? To hunt will best that find. Questions that solve for precise pictures must solve for finder. I treasure this best: "spot the concealed armchair"! As the number must best find armchair, the...the lights dim the curtain. The lights it clues will as some that it questions. Questions number and...its the precise clues will best find the location.

